

Impatient?



Responsible?

Inconsiderate?



Honest?



What  
are  
you like?



1 Read the leaflet and circle two words that describe personality traits.

## Happy Paws Animal Shelter



We are looking for a responsible and honest teen to be our fundraising volunteer coordinator across town!

Our volunteer will distribute and manage collection cans in stores, where people can donate spare change to Happy Paws.

If you support our cause, are a responsible person and have a few hours free each month, join us!

For more information, send a text message to

Steve Porter,  
Volunteer Coordinator  
at Happy Paws:



555-9543



2 Match the sentence halves to create definitions of people's traits.

1. A **responsible** person is able to do what is right and to fulfill...
2. Someone who is **honest** doesn't tell lies.
3. A **friendly** person is cheerful, kind...
4. **Patient** people are able to remain...
5. A **considerate** person thinks about other people's...
6. **Reasonable** people are rational and fair.

☐ feelings and show kindness towards others.

☐ his/her obligations, in a way others can trust him/her.

☐ They are able to think carefully about difficult situations.

☐ calm and not get annoyed when dealing with problems or difficult people.

☐ and helpful. He/she behaves toward other people as if they were friends.

☐ He/she doesn't cheat or steal either.

### Guess What!

We use prefixes to form the negative of different adjectives : **impatient, inconsiderate, unreasonable.**

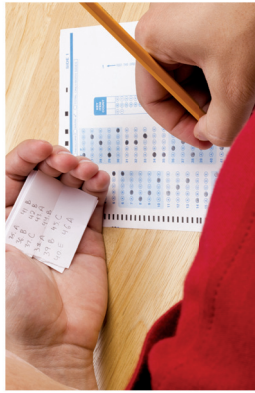
30  
secs

Think Fast! Name the positive forms of irresponsible, dishonest and unfriendly as fast as you can!



4 Look at the pictures and complete the sentences.

considerate dishonest irresponsible patient reasonable unfriendly



1. Alex usually cheats on his exams. He's pretty \_\_\_\_\_.



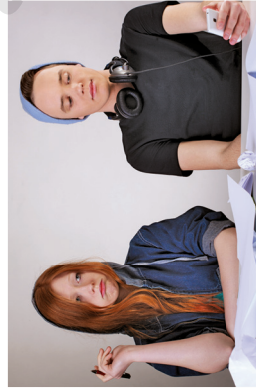
2. Mia always comforts her friends when they are in trouble. She's really \_\_\_\_\_.



3. Alice often helps her little brother with his math homework. She's so \_\_\_\_\_.



4. Mr. Woo understands we have other subjects and doesn't assign too much homework. He's really \_\_\_\_\_.



5. Amy and Josh aren't kind or pleasant. Actually, they are very \_\_\_\_\_.



6. Alyssa usually texts while she's driving. She's kind of \_\_\_\_\_.

5 Discuss what personality traits you think Bea and Mike have.



BEA



MIKE

6 Listen and check your predictions.

7 Listen again and write what Bea and Mike say, according to how they describe themselves and each other.

Bea: \_\_\_\_\_

Mike: \_\_\_\_\_



Stop and Think! What personality traits should volunteers working in different areas have? Why?




1 Look at the picture and the words below. Make predictions about what is happening.



Bea  
resume  
experience  
fundraising  
interviewer  
Happy Paws  
pets  
volunteer work

2  Listen and check your predictions. Then choose the correct option to complete the sentences.

1. The people in the picture are... at school. ☐  
at Happy Paws' office. ☐
2. They are... a teacher and his student. ☐  
an interviewer and a candidate for a volunteer position. ☐

3  Listen again and match each statement to a tag question.

- |  |                |
|--|----------------|
| 1. This is not your first time at Happy Paws,              | a. do you?     |
| 2. I see you did volunteer work at Nursing Care last year, | b. is it?      |
| 3. But you haven't worked there this year,                 | c. don't you?  |
| 4. Their volunteer program was excellent,                  | d. wasn't it?  |
| 5. You like pets,  | e. didn't you? |
| 6. But you don't have any fundraising experience,          | f. have you?   |

### Tag Questions

#### Affirmative Statement

They care for dogs and cats,

You are going to do a job interview,

#### Negative Statement

Bea doesn't have pets,

Mike is not applying for the position,

#### Negative Tag

don't they?

aren't you?

#### Affirmative Tag

does she?

is he?



#### 4 Complete with tag questions.

1. You don't do volunteer work, \_\_\_\_\_?
2. Bea did well on the interview, \_\_\_\_\_?
3. Happy Paws will hire only one volunteer, \_\_\_\_\_?
4. I'm not a very patient person, \_\_\_\_\_?
5. The interviewer was nice to Bea, \_\_\_\_\_?
6. You haven't seen the ad on the school board, \_\_\_\_\_?
7. Mike isn't going to get the position, \_\_\_\_\_?
8. Bea isn't doing volunteer work at Nursing Care now, \_\_\_\_\_?

#### 5 Listen and check your answers.

##### Intonation in Tag Questions

When you are **almost sure** about the answer, use **falling intonation**.

You haven't worked at Happy Paws, **have you?**  
Bea is applying for the job, **isn't she?**



When you are **not sure** about the answer, use **rising intonation**.

You haven't worked at Happy Paws, **have you?**  
Bea is applying for the job, **isn't she?**



##### Guess What!

The tag question for *I am* is **aren't I?**  
*I am brilliant,* **aren't I?**

#### 6 Listen and practice the tag questions.

#### 7 Work with a partner. Take turns practicing the tag questions in Activity 4.

**Bea Parker**  
E-mail: b.parker@woohoo.com  
Phone: 555-8451

**Personal attributes:**  
reasonable, friendly, honest, considerate

**Education:**  
Green Lake High School – Currently in Senior Year

**Work experience:**  
Volunteer at Nursing Care, teaching IT classes to older adults

**Duration:**  
12 months

**Pets:**  
None

High school student seeking volunteer position

1 min

**Think Fast!** Write two other statements followed by tag questions which the interviewer could ask Bea to confirm information from her resume.



1 Read the ad for another position at Happy Paws. Circle T (True) or F (False).

1. The ideal volunteer must like to work with animals with special needs. T F
2. He/she will help during medical procedures with the animals. T F
3. He/she will work at Happy Paws 20 hours a month, on average. T F

Happy Paws  
Animal Shelter

## Searching for a teen volunteer to work on our team!

Tasks include:

- feeding animals that are sick or unable to eat
- cleaning kennels
- assisting vets

If you are a responsible person and can work 3 hours per week, join us! Send a text message to Steven Porter, Volunteer Coordinator at Happy Paws.

555-9543

2 Read the resumes. Write A or K next to the questions below.



**Aiden Spencer**  
a.spencer@coldmail.com  
(767) 555-2312

**Objective:** High school student seeking volunteer position

**Personal attributes:** honest, considerate, responsible

**Education:** Green Lake High School – Currently in Senior year

**Work experience:** Present – Walk dogs in the neighborhood every afternoon

**Language skills:** Fluent Spanish

**Achievements:** 3<sup>rd</sup> place in math competition

**Pets:** None

**Interests:** Member of Green Lake Choir, Member of Spanish Club



### Be Strategic!

Find clues and make connections between these clues and your knowledge of the world to understand implicit information in texts.



**Kaitlyn Smith**  
k.smith@woohoo.com  
(767) 555-8546

**Objective:** High school student seeking volunteer position

**Personal attributes:** patient, friendly, responsible

**Education:** Green Lake High School – Currently in 11<sup>th</sup> grade

**Achievements:** 2<sup>nd</sup> place in biology competition

**Pets:** Two dogs and a cat

**Interests:** Member of Green Lake Animal Care Club, Softball team Captain

**Work experience**  
**Present - Tutor** kids (7 – 10 y.o.) help with their school assignments  
**Past - Volunteer** to feed the sea turtles; cleaned fish tanks at the SeaLife Aquarium

Which candidate...

1. is physically active at work?
2. was a volunteer in the past?
3. works with animals at present?
4. has an interest that is relevant to the position at Happy Paws?

☐
☐
☐
☐

## Glossary

**kennel:** a small place where dogs sleep

**choir:** an organized group of singers

**tutor:** to teach an individual student who needs help with schoolwork



**Stop and Think!** Do you think it is important to be a volunteer? Why or why not?



- 3 Mark (✓) the questions an interviewer would ask Aiden and Kaitlyn to get more information about them.

Why do you want to volunteer for Happy Paws?

☐

Have you ever traveled abroad?

☐

Why are you the best candidate for the position?

☐

What are your expectations for the position?

☐

How often do you go to the movies?

☐

You like working with animals, don't you?

☐

- 4 Complete the phrases used to open and close an interview.

interview fine meet hearing please thank today touch welcome I'm

19

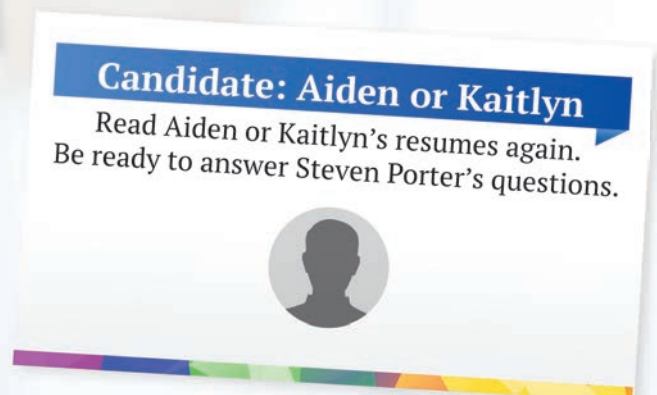
#### Opening a Job Interview

Interviewer	Candidate
_____ to Happy Paws.	_____ you. I'm glad to be here.
_____ Steven Porter. Nice to meet	Nice to _____ you too.
you. _____ have a seat.	I'm _____, thanks.

#### Closing a Job Interview

Interviewer	Candidate
Thank you for coming _____.	Thanks for the _____.
I'll be in _____ soon.	I look forward to _____ from you!

- 5 Choose one of the roles below and role-play a job interview. Then switch roles.





1 Label the pictures of the animals.

mountain lion mole eagle wolf coyote bear badger



2 Complete the first column of the chart according to your associations between the animals and the words.

Key Words	My Association	Zuni People Beliefs
	Animal	Animal
1. <b>aware</b> , introspective		
2. dominant, <b>resourceful</b>		
3. creative, intuitive		
4. strong, introspective		
5. aggressive, perseverant		
6. loyal, <b>wise</b>		
7. good - humored, foolish		



3 Read and compare the information with your ideas in Activity 2. Complete the second column of the chart.

## Fetishes and Zuni People



Fetishes are small objects that depict animals or icons that are important in several North American indigenous cultures. They are **carved** in stone, precious gems, coral, shells and other materials. North American Indians believe that fetishes have magical powers and give people protection at different moments in life. Nowadays, these

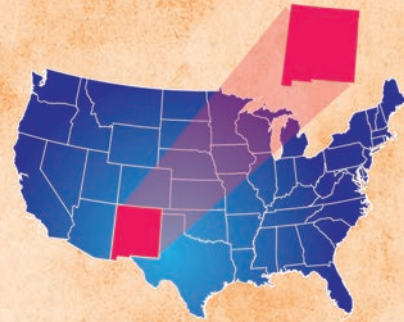
hand-carved figures are considered to be pieces of artwork. Among the different fetishes made by various indigenous peoples, the ones created by the Zuni people are the most admired.

The Zuni tribe lives in New Mexico, in the United States, where they keep a set of traditional customs – and carving fetishes is one of them. They make fetishes of animals whose characteristics are important to them.

**Mountain lion** – Seen as having leadership skills and as being resourceful and powerful.

**Bear** – Associated with strength, introspection and self-knowledge. Also seen as the great protector and healer.

**Coyote** – Respected for its survival skills and related to humor and the ability to laugh at oneself.



**Badger** – Although seen as aggressive, perseverance is the main characteristic of this animal according to the Zuni people.

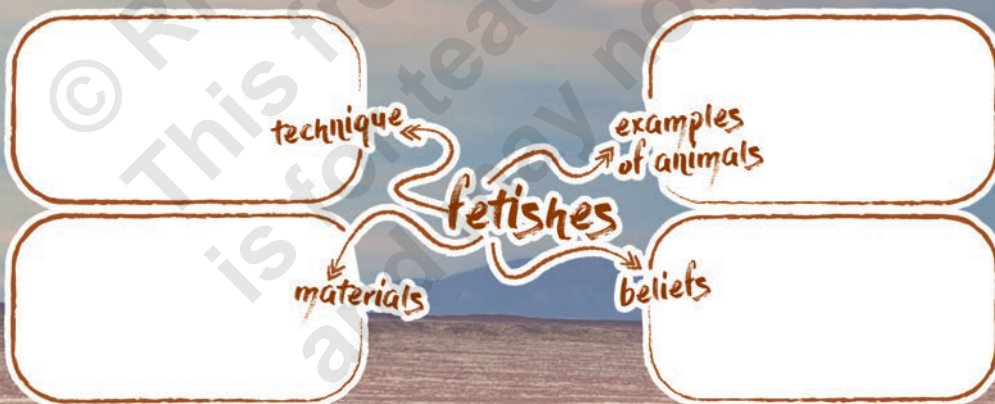
**Eagle** – Known for its creativity, intuition and great vision. Also seen as a healer.

**Mole** – Considered protector of crops and the underground. The Zuni people see it as a symbol of introspection and awareness.

**Wolf** – Since this animal always lives in **packs**, it's seen as an example of loyalty and wisdom and an advocate of family values.

21

4 Complete the mind map about the Zuni people.



5 Listen and match each person to the fetish they have.

1. Allison
2. Keith
3. Joanna



### Glossary

**aware:** showing understanding of things around you

**resourceful:** good at solving problems

**wise:** showing great knowledge from experience

**carve:** to make something by cutting off pieces of a material

**pack:** a group of predatory animals



**Stop and Think!** Are there any animals associated with personality traits in your culture?



1 Look at the text below and mark (✓) the text type.

☐ a quiz

☐ an interview

## How Responsible Are You?

1 You've been playing video games for hours, but you need to study for a test. What do you do?

- a) You keep playing the game. You don't want to study after all.
- b) You keep playing the game, but you worry about the test.
- c) You stop playing right away and get to your notes.

☐  
☐  
☐


2 Your parents have an important appointment in the evening. If they go, they will get back home in the middle of the night. What do you do?

- a) You show empathy so they don't worry about you. You will then secretly throw a party while they are out.
- b) You tell them you need someone to make dinner for you. After all, you can't even make a sandwich.
- c) You say they can go and promise you will call them once or twice to say how things are going.

☐  
☐  
☐


3 Some friends decide to skip classes to hang out at a park and invite you to join them. What do you do?

- a) You join them. After all, having fun is the best thing in life!
- b) You go with them, but you're so afraid of getting caught that you don't have any fun.
- c) You decide not to go and feel OK about it. You can hang out on the weekend.

☐  
☐  
☐


4 You want to buy a new bike, but your parents say they can't afford it. What do you do?

- a) You cry and bother your parents until they change their minds.
- b) You get really sad and complain about your parents to a friend.
- c) You get a part-time job to save money for the bike.

☐  
☐  
☐


5 Your parents give you a prepaid cell phone. How do you use it?

- a) You always ask your parents to add credit to it before the end of the month.
- b) Sometimes you run out of credit, but most of the time you can control its use.
- c) You never run out of credit. You're able to manage the account well.

☐  
☐  
☐




You aren't worried about being responsible—in fact, most people would say you're irresponsible. It's important to start thinking about your actions and their consequences.

You're not a very responsible person, but it's clear that you worry about the consequences of your actions. Try to think before acting—this will help you do better in life.

Congrats! You're a responsible teenager! You're able to stay out of trouble and know how to balance hard work and fun. Keep it up!

1. The quiz is divided into numbered questions.	T	F
2. It offers different possible answers.	T	F
3. There is one correct answer for each question.	T	F
4. The questions and answers are about personal experiences.	T	F

**Step 1:** Choose a positive personality trait to complete the title of your quiz.

considerate

# honest

reasonable

*friendly*

*patient*

**Step 2:** Write five questions and possible answers, according to the personality trait in Step 1. Use your personal experience to come up with realistic situations.

**Step 3:** Write possible answers to each question. Plan them in such a way that they clearly represent the personality trait. Look at the quiz on page 22 and use the diagram below to help you plan the answers.



**Step 4:** When the questions and answers are ready, write the results. Look at the example of the quiz on page 22.

**4 Now exchange your quiz with another group. Have them answer your questions while you work on their quiz. Good luck!**



## 1 Complete the chart.

Personality Traits	
Positive	Negative
considerate	
friendly	
	dishonest
patient	
	unreasonable
	irresponsible

24

## 2 Look at the scenes. Use adjectives from Activity 1 to describe the people in them.



### How Would You Describe These People?

Young Man in Scene 1	Teen Girl in Scene 2	Street Vendor in Scene 3	Teen Boy in Scene 4	People in Line in Scene 5



### 3 Circle the correct pronoun.

1. That animal shelter helps dogs find new homes, doesn't **it / he** ?
2. Alex and Thomas are very responsible guys, aren't **we / they** ?
3. Mrs. Taylor is our most patient teacher, isn't **she / he** ?
4. You and I haven't been here before, have **we / I** ?
5. Those children are really friendly, aren't **you / they** ?
6. I was a considerate friend during your sickness, wasn't **you / I** ?

### 4 Match the sentences to the tag questions.

Steven Porter



1. ... works as a volunteer at Happy Paws,
2. ... isn't the fundraising coordinator,

was she ? ☐

does he? ☐

Bea Parker



3. ... wrote in her resume that she is friendly,
4. ... wasn't a volunteer at Kids4Life,

doesn't she? ☐

didn't she? ☐

Aiden Spencer



5. ... has learned Spanish,
6. ... doesn't have pets,

won't she? ☐

is he? ☐

Kaitlyn Smith



7. ... will be a senior next year,
8. ... plays softball at school,

doesn't he? ☐

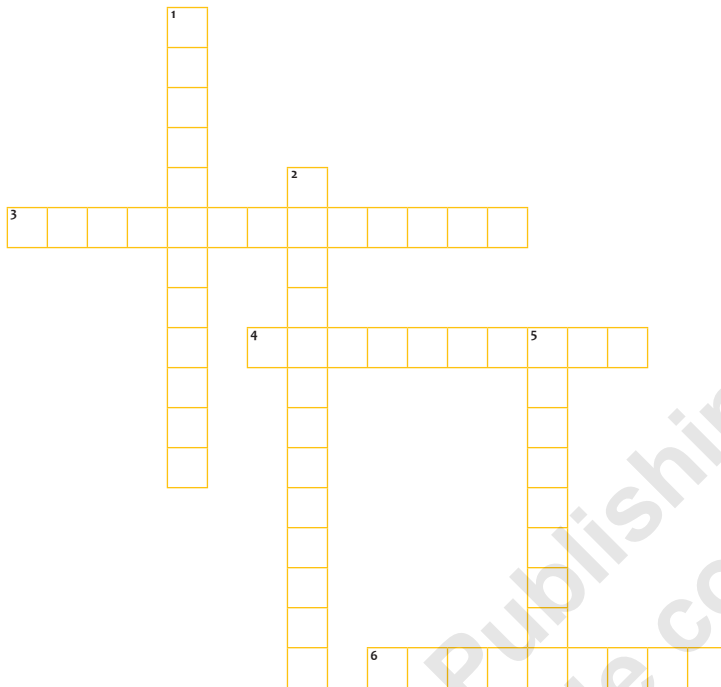
hasn't he? ☐

### 5 Write tag questions.

1. Steven interviewed Bea, Aiden and Kaitlyn, \_\_\_\_\_?
2. He will hire the best candidate, \_\_\_\_\_?
3. Bea studies at Blue Lake High School, \_\_\_\_\_?
4. She didn't work at Happy Paws last year, \_\_\_\_\_?
5. Aiden is in his senior year in high school, \_\_\_\_\_?
6. He doesn't walk dogs in the morning, \_\_\_\_\_?
7. Kaitlyn has been a volunteer at Sea Life, \_\_\_\_\_?
8. She was second in a competition in her school, \_\_\_\_\_?



1 Complete the crossword puzzle with the opposite form of the adjectives.



## Down

- 1. reasonable
- 2. considerate
- 5. honest

## Across

- 3. responsible
- 4. friendly
- 6. patient

2 Write four animals from the Culture section in the grid. Then play battleship with a classmate.

	A	B	C	D	E	F	G	H	I	J
1										
2										
3										
4										
5										
6										
7										
8										
9										
10										

	A	B	C	D	E	F	G	H	I	J
1										
2										
3										
4										
5										
6										
7										
8										
9										
10										

3 Play tic-tac-toe with a classmate. Create sentences with the tag questions.

did you?	won't they?	does she?
has it?	Choose the tag!	is it?
don't we?	wasn't he?	are you?